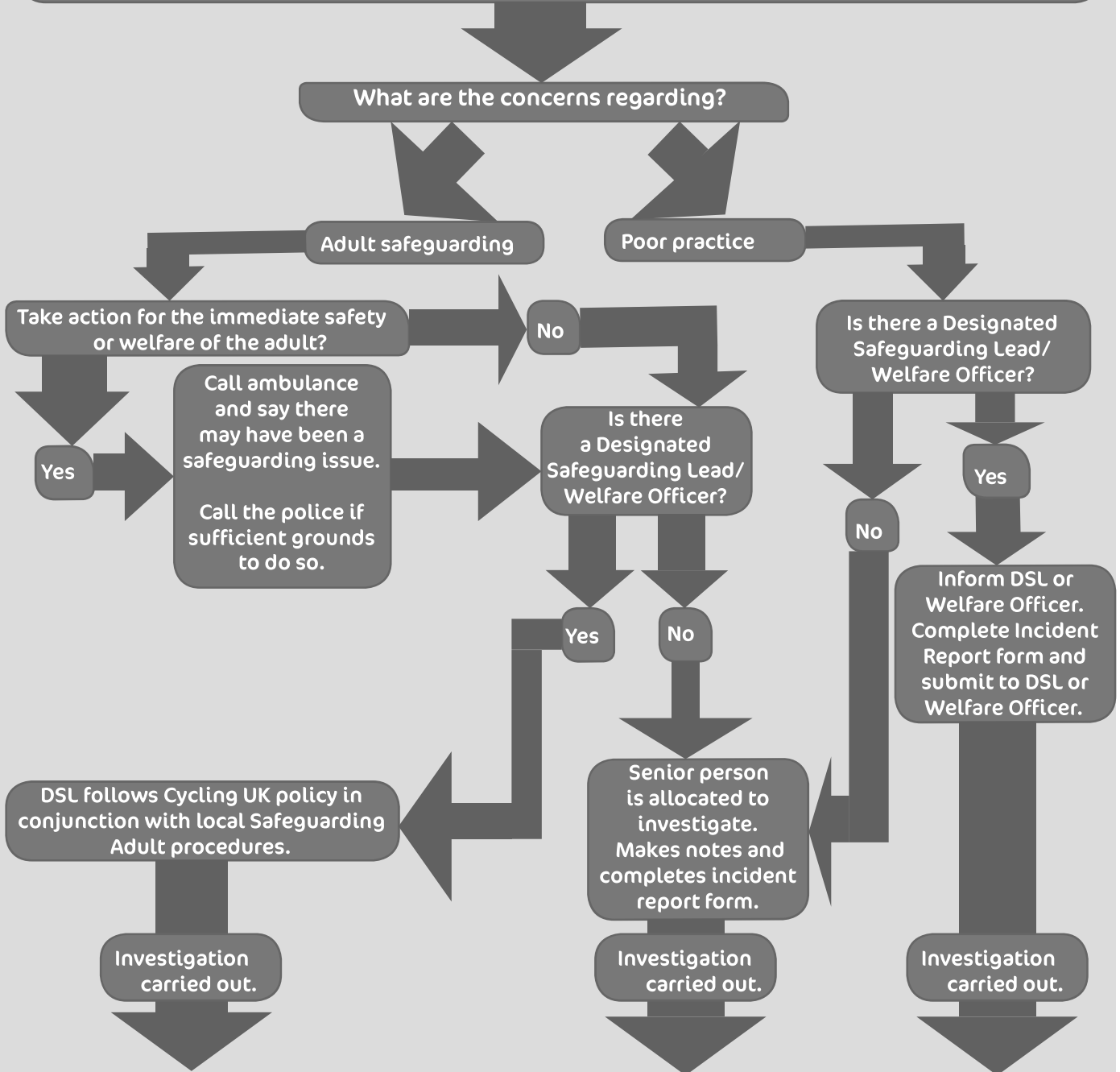


# Cycling UK's Step-by-Step Guide to Reporting Safeguarding Issues Concerning Adults



There are concerns or suspicion about a person's behaviour OR there has been disclosure or an allegation about a person's behaviour.



- Possible outcomes:**
- Criminal proceedings
  - Police enquiry
  - Adult Care Safeguarding assessment
  - Disciplinary measures
  - Case management group to decide on the management of any remaining concerns
  - No further action